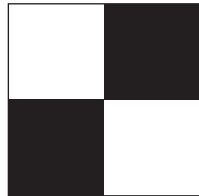
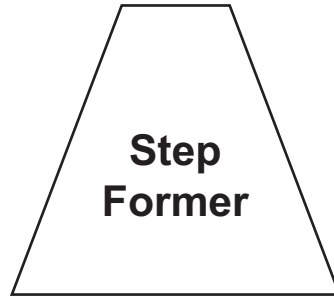


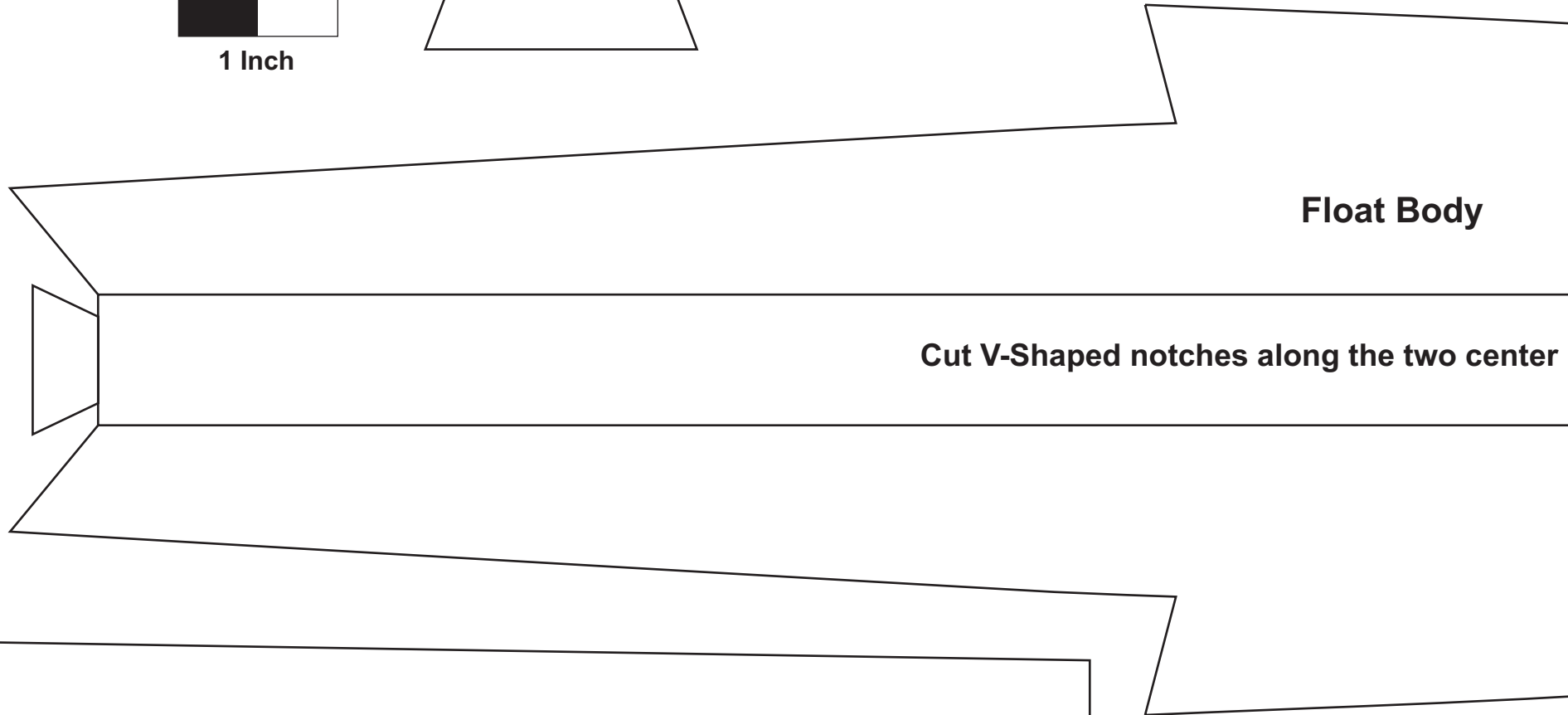
Copyright ©2003 FoamFly.com



1 Inch



Instructions: Fold along the two center lines of the main Float Body. Glue the Step Former inside the float aligned with the step. Then, pre-curve the bottoms, and glue them in place, inside the edges of the main float body.



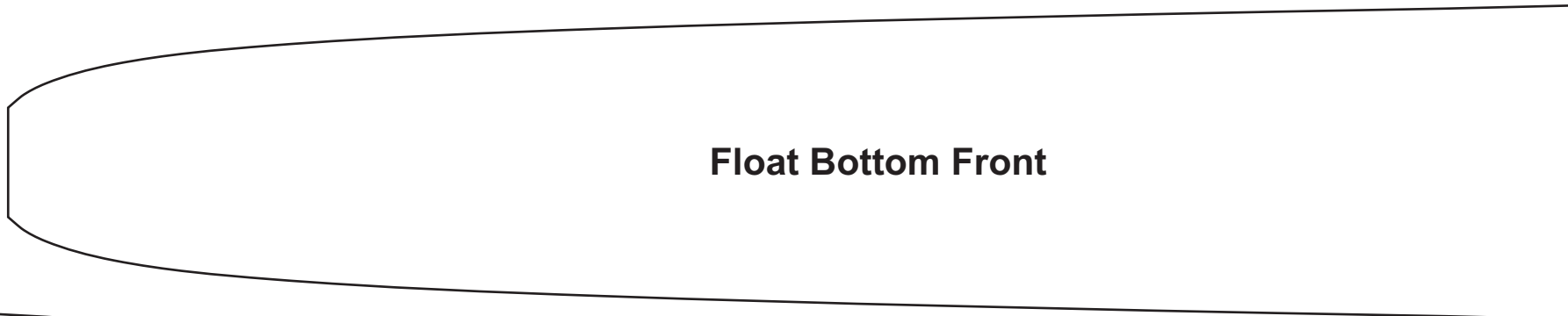
Float Body

Cut V-Shaped notches along the two center



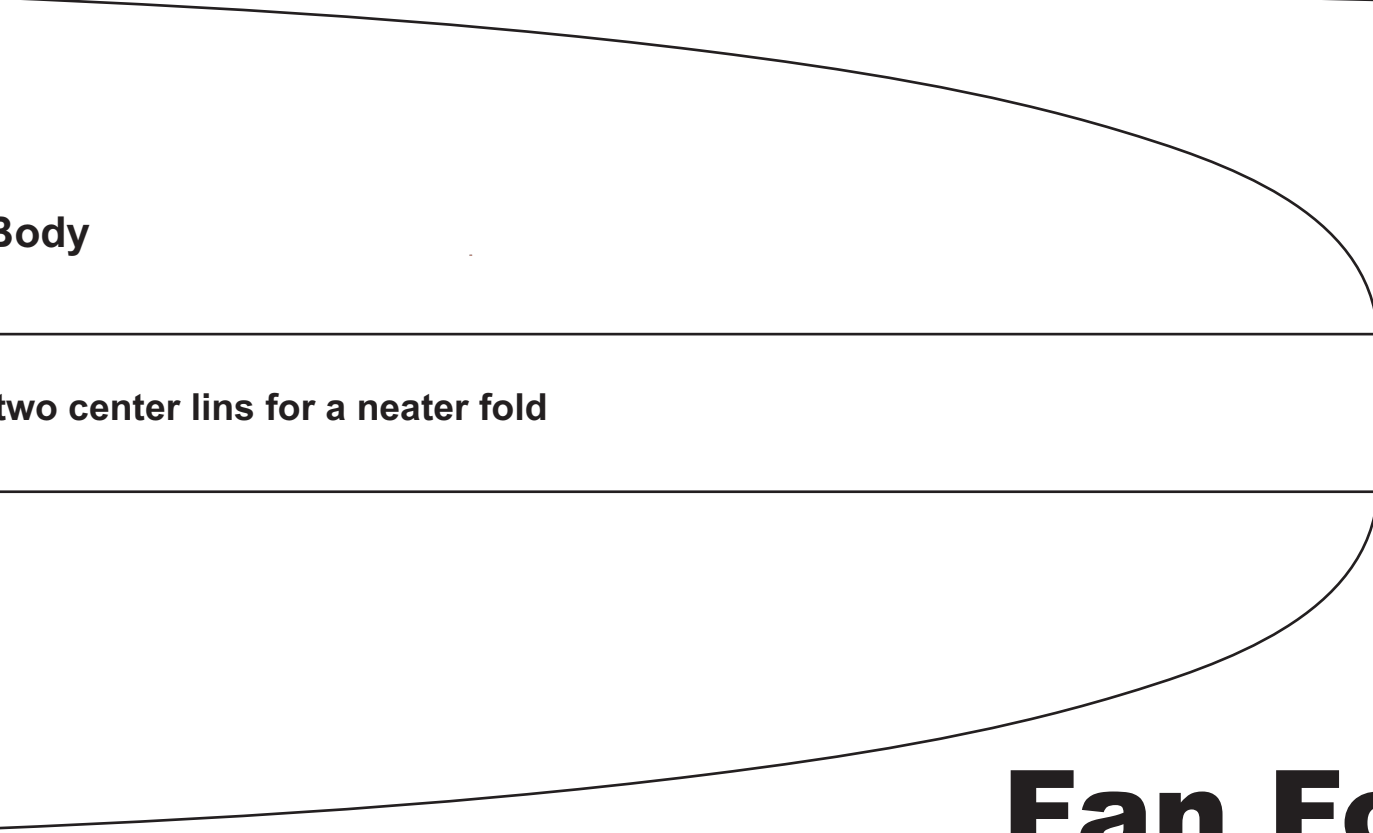
Float Bottom Rear

r
o
.
n



Body

two center lines for a neater fold



Note:
Make Two of Everything.

These floats are sized for planes in the 28"-32" wingspan, and 7-9oz range. They can be scaled up for larger planes.

Do make sure that the floats are watertight. ;)

Fan Fold Floats

Designed By: Dan Schwartz

